



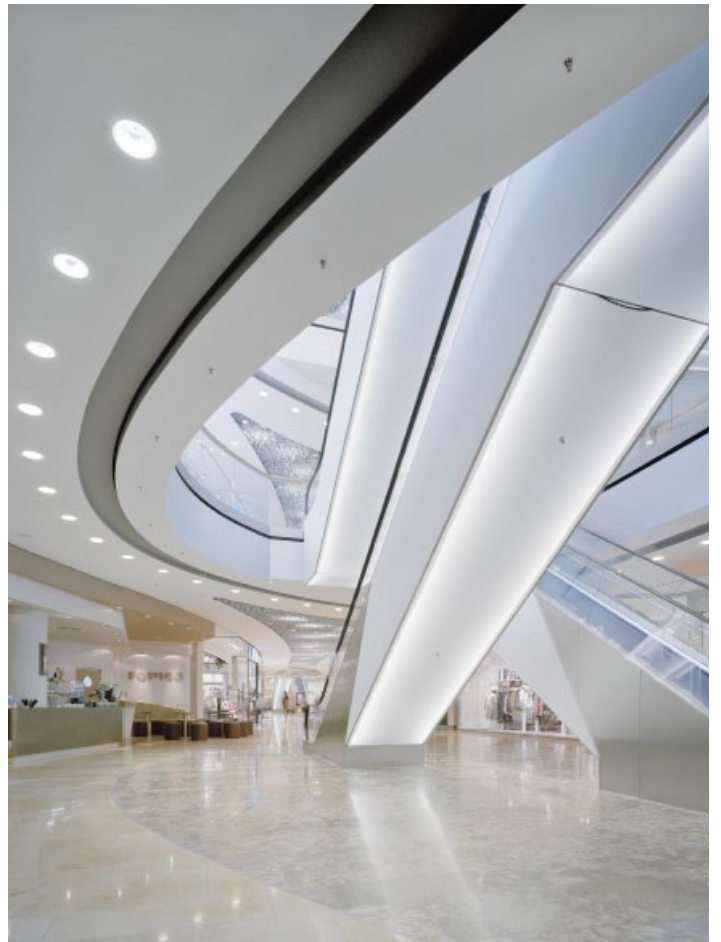
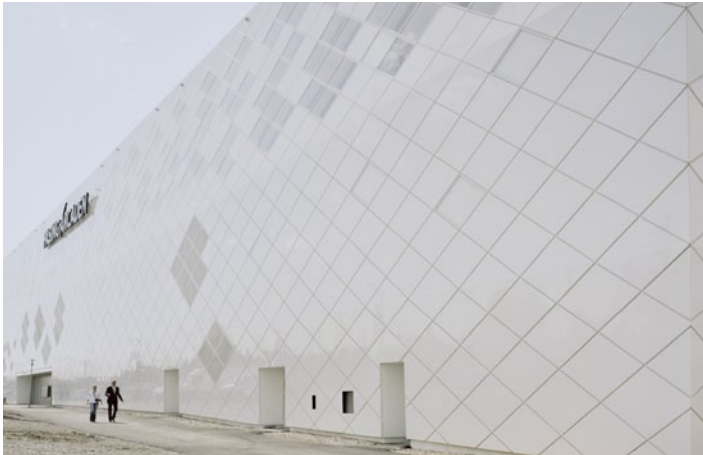
## PASING ARCADEN

The multi-functional building in immediate vicinity of Pasing's railway station combines shopping, dining and living in a single structure. In the context of the development scheme incorporating derelict railway stations around the main station, Laim and Pasing (Zentrale Bahnflächen Hauptbahnhof-Laim-Pasing), the restructuring of the area around Pasing station and the further surroundings has taken on a key function.

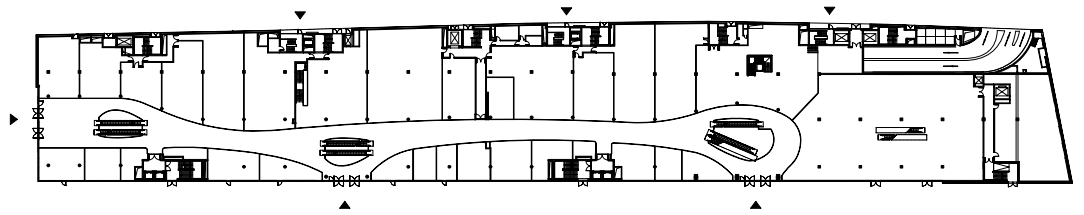
A green corridor, forming a seam between the district Pasing and the new adjoining terminal building, is used to integrate the large volume into the surroundings. Subtle folds in the facade clad with light metal panelling help to structure the large format. Together, Pasing Arcaden and the listed Bürklein station, which now houses a restaurant after its refurbishment, form a lively public area. The entrance to the shopping mall faces the new square, Bürkleinplatz, creating a link between the building and the exterior space. The partially daylight interior circuit through the mall leads back to the place via a round-about system allowing glimpses into the exterior space to the south of the building.

Approximately 50 apartments with views of the alps are on the roof of the three-storey building. The dwelling units are accessed via planted courtyards, which open up to the south. Pasing Arcaden forms a distinct urban boundary line to the bypass and the railway tracks running north of the site.

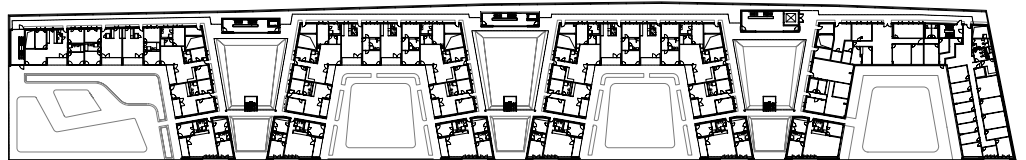
The Pasing Arcaden have been awarded with the DGNB -Certificate Gold by the German Association for Sustainable Building.



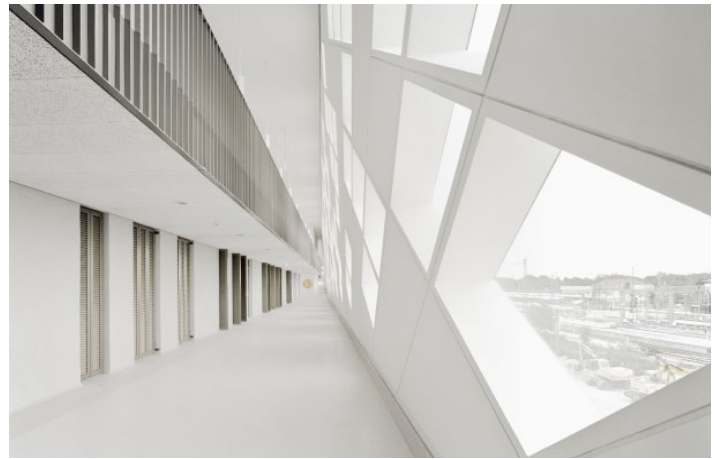
BURKLEINPLATZ (TOP LEFT), NORTH-FACING FACADE (BOTTOM LEFT), MALL (RIGHT)



GROUND FLOOR, MALL



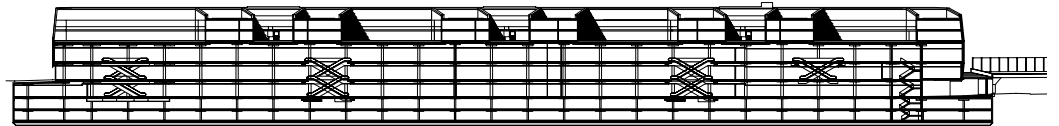
APARTMENTS, LEVEL 2



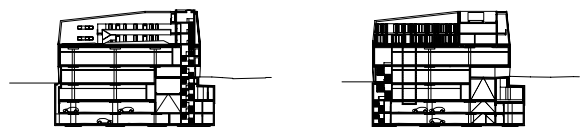
APARTMENT LEVEL WESTERN YARD (O.), EASTERN YARD (U.)

ARCADE BEHIND THE NORTH-FACING FACADE (TOP)  
NORTH-FACING FACADE (BOTTOM)

LONGITUDINAL SECTION



CROSS SECTION





## PASING ARCADEN - PROJECT DATA

Competition 2007	1. Prize
Location	Pasinger Bahnhofplatz 5, 81241 Munich
Project Phase	01/2007 - 07/2011
Building Phase	07/2009 - 04/2011
Work Stages	HOAI § 15, Lph 1 - 4, parts Lph 5 - 6, artistic supervision, quality assurance
Client	Pasing Arcaden GmbH & Co KG, Essen
Project Development/Investor	mfi Management für Immobilien AG, Essen, Bayern IMMO
Design	Sebastian Kordowich (project manager) Uwe Ernst, Katharina Thomas
Realization	Sebastian Kordowich (project manager) Philippe Bauer, Julia Behm, Christian Boland, Matthias Junghänel, Robert Klein, Rouven Würfel, Andreas Scholz
Total Cost incl. VAT	86 Mio. €
Gross Floor Area	67.000 m <sup>2</sup>
Gross Volume	290.000 m <sup>3</sup>
Structural Engineer	Schüßler Plan, Düsseldorf
Building Services	HTW, Düsseldorf
Landscape Design	Topotek 1, Berlin
Photos	Brigida González