



## WÜRTH SUBSIDIARY

The subsidiary of Adolf Würth GmbH & Co. KG is within the commercial area of Munich Freiham – a new urban district to the west of Munich planned by Bavaria's capital and currently under development.

Located amidst the heterogeneous commercial area, the building has been explicitly designed not to stand out by being different. The intention was to integrate it in its industrial surroundings and contribute towards the discussion concerning commercial buildings on the outskirts of towns. The building attains its independence by conjuring up an abstract image of volumes in a heterogeneous environment – the differentiation is achieved through simplification. The forecourt beneath the protruding canopy roof appears as a segment of the total volume.

The two-story-building contains the pick up branch, which is located on the ground level and transparent to the outside as well as an office- and seminar area, accessible separately via a ramp staircase. The offices on the upper level obtain an incised patio.

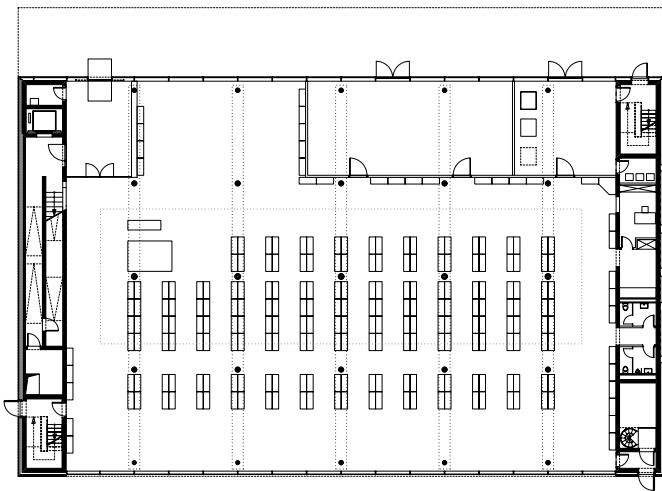
The reinforced concrete structure is - with the exception of the glass facade areas - enveloped by an almost white and opaque facade made of polycarbonate panels. Due to the special surface appearance, the common industrial material is transformed and upgraded. Shape and facade, merely interrupted by the company's logo, evoke a homogeneous image.



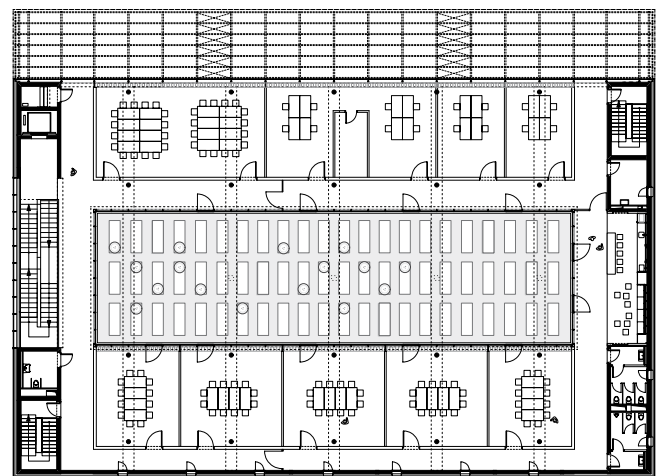
WINDOW TO THE STREET



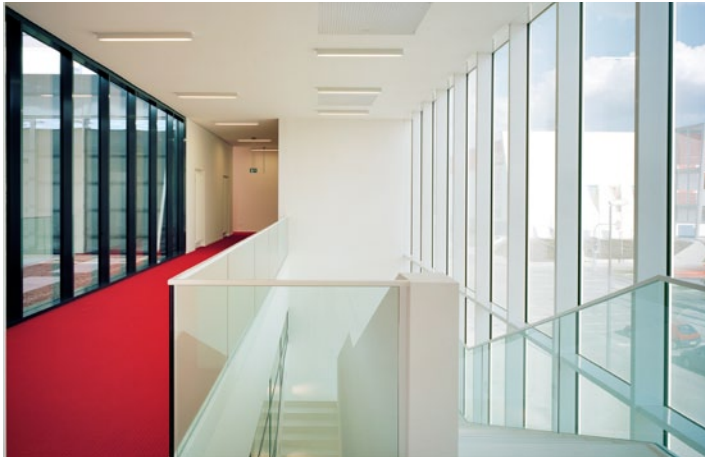
MAIN ENTRANCE TO THE PARKING AREA



FLOOR PLAN GROUND LEVEL

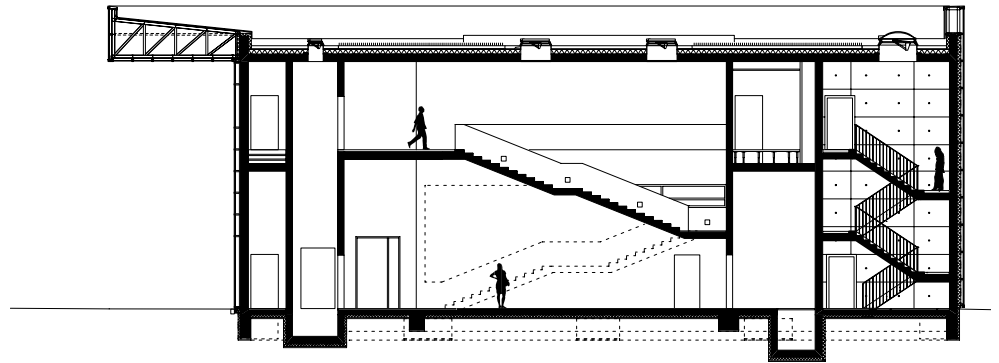


FLOOR PLAN UPPER LEVEL

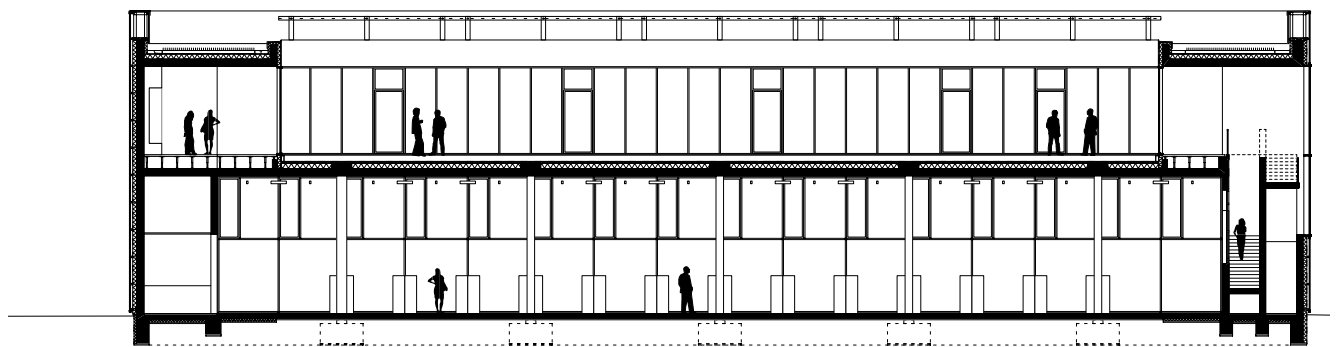


RETAIL AREA GROUND LEVEL  
STAIRCASE

KITCHEN AND LOUNGE AREA FACING THE PATIO  
PATIO UPPER LEVEL



CROSS SECTION



LONGITUDINAL SECTION



SOUTH-WEST ELEVATION

### WÜRTH SUBSIDIARY - PROJECT DATA

Competition 2007	1. Prize
Project phase	12/2007 - 04/2009
Building phase	2008 - 2009
Work stages	HOAI § 15, Lph 1 - 9
Bauherr	Adolf Würth GmbH & Co. KG
Total costs incl. tax	3,51 Mio. €
Total gross area	2.400 m <sup>2</sup>
Total volume	17.700 m <sup>3</sup>
Structural Engineer	Wieland + Meißner Ingenieurgesellschaft mbH, Öhringen
Open space planning	Realgrün Landschaftsarchitekten, Munich
Building services	Pfähler & Rühl GmbH, Heilbronn